

# WOMEN'S AND GENDER STUDIES

## SPRING 2016 REGISTRATION/ADVISING NEWSLETTER

*We urge you to **please see your advisor prior to registration**. It is especially important that you receive appropriate advisement and that we keep your records updated. WGS faculty will be posting sign-up sheets outside their offices. **Be sure to sign up!***

- \* Registration for the Spring 2016 semester begins on Tuesday, November 3, 2015 and runs through Friday, November 13, 2015. You can find the date and time at which you become eligible to register on PAWS. If you have yet to do so, please familiarize yourself with the PAWS system.
- \* If you don't know who your advisor is, then find out. Your advisor should be listed on your PAWS account. If your advisor is not listed, please call the Women's and Gender Studies Department office at 609-771-2539.
- \* Prior to your advisement appointment, retrieve all the necessary information you will need.
- \* Review the WGS Department Advising Syllabus at: <http://wgs.pages.tcnj.edu/for-students/advising/>
- \* Review the requirements for your program. Check the courses offered. Devise a tentative schedule for the Spring including back-up courses. Put desired courses in your PAWS shopping cart.
- \* Bring your updated Academic Requirement Report to your advisement meeting.
- \* If you are a double major with the School of Education as your first major, you must also make an appointment to see your Education advisor.

### WGS MAJOR REQUIREMENTS

#### **Section I: Five Core courses**

WGS 200 Women, Culture and Society  
 WGS 325 Feminist Theories  
 WGS 398 Field Study in Women's Studies  
 WGS 495 or 496 Senior Seminar  
 Gender in Global Perspectives - choose from:  
   WGS 260/AAS 280 Women of African Descent in Global Perspective  
   WGS 360/LIT 334 Lit by Latinas and Latin American Women\*  
   WGS 375 Transnational Feminisms  
   WGS 376/LIT 316 Global Women Writers \*  
   WGS 380/HON 338 Gender & Democracy  
   WGS 381/ANT 311 Woman & Migration

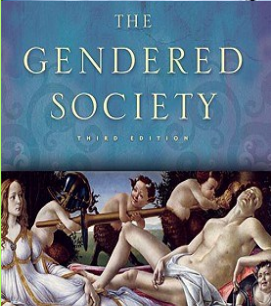
\* Elementary Education and Early Childhood majors must choose:  
 WGS 376/LIT 316 Global Women Writers or  
 WGS360/LIT 334 Lit by Latinas and Latin American Women

#### **Section II: Women's & Gender Studies Options** Five additional WGS courses. \*

\* Elementary Education and Early Childhood majors must choose:  
 WGS 225 Gender and Children's Literature  
 Three WGS/HIS courses  
 One additional WGS/English courses

#### **Section III:**

Five courses of the ten in the major must be at a level of 300 or above.



### WGS MINOR REQUIREMENTS

- \* WGS 200 Women, Culture and Society
- \* Four additional WGS courses

### CONCENTRATIONS IN WOMEN'S & GENDER STUDIES

*See the Women's and Gender Studies website for details about possible concentrations:*  
<http://www.tcnj.edu/~wgst/>

#### **Women and Gender**

Core: WGS 200 Women, Culture and Society  
Options: Take 4 additional WGS courses as described on the Women's and Gender Studies website.

#### **Gender, Nation Democracy**

Core: Choose at least 1 from the following:  
   WGS 380/HON 338 Gender and Democracy  
   WGS 375 Transnational Feminisms  
   WGS 310/HON 337/HIS 324 Women in Eastern Europe: 1848-present  
Options: Take 4 additional WGS courses as described on the Women's and Gender Studies website.

#### **Sexualities**

Core: WGS 250 Politics of Sexuality  
Options: Take 4 additional WGS courses as described on the Women's and Gender Studies website.

#### **Women in Learning and Leadership**

Core: WGS 200 Women, Culture and Society – Leadership section  
Options: Take 4 additional WGS courses as described on the Women's and Gender Studies website.

#### **Gender and Violence**

Core: WGS 235 Gender and Violence & Internship (see website)  
Options: Four additional WGS courses – 2 in Arts and Humanities and 2 in Social Sciences and History. See website for complete list of options.

# **WOMEN'S AND GENDER STUDIES – SPRING 2016**

## **COURSE DESCRIPTIONS**

### **WGS 200 – Women, Culture, and Society (LL: Behavioral, Social or Cultural Perspectives; Gender)**

Women, Culture and Society serves as the preliminary course to the interdisciplinary field of Women's and Gender Studies. It will provide students with an introduction to the literature and the historical evolution of the discipline, as well as an understanding of how scholars and students in the field analyze women, gender, and feminist theories. It will use an interdisciplinary approach to do this. This introductory course encourages students to rethink and reevaluate much of what they have experienced and learned and to gain the critical vocabulary and analytic skills to question the gendered world in which they live.

### **WGS 220 – Gender and Popular Culture (LL: Literary, Visual & Performing Arts; Gender)**

This course offers a critical examination of the messages and "knowledge" that popular culture employs, disseminates and constructs about men and women, masculinity and femininity. We will take our objects of study from a wide range of sources including advertisements, magazines, television, film, cyberspace, hip hop, and sports. Be ready to watch TV, go to the movies, and listen to music as a scholar of gender.

### **WGS 222 – Non Violence and Peace Action (LL: Gender, Behavioral, Social or Cultural Perspectives, and Global Perspectives)**

Offers an overview of key areas of theory and practice in Peace and Justice Studies, a growing interdisciplinary field with applications from the local community to international relations. Aimed at achieving social transformation through active nonviolence, peace studies promotes in-depth understanding of structures that promote and perpetuate violence and offers methods for transforming the terms of conflict.

### **WGS 225 – Gender and Children's Literature (LL: Literary, Visual & Performing Arts; Gender)**

Our purpose in this course will be to develop a critical appreciation of the roles of children's literature in the social construction of gender--not only how it prescribes or resists normative gender roles, but how it represents the subjective experience of growing up gendered. With a grounding in gender theory and critical texts, we will explore the early beginnings of children's literature in collections of folklore and fairy tales, then move on to modern classics and contemporary favorites, limiting our scope to works for young children and pre-teens.

### **WGS 235 – Gender and Violence (LL: Social or Cultural Perspectives, Gender)**

This course explores the relationship between gender and violence. It is comprised of theoretical perspectives as well as the study of specific forms of violence. Topics include: domestic and intimate partner violence; sexual violence; child abuse; socially institutionalized forms of violence against women; attitudes and reactions to violence; national and global contexts of violence; the gendered character of violence in patriarchal societies; the intersections between violence, race, class and sexuality; men and violence.

### **WGS 241 – Introduction to Sexuality Studies (LL: Gender; Behavioral, Cultural and Social Perspective)**

This course serves an introduction to an examination of sexuality from a social perspective. In this way, we will engage in critical analyses of the existing organization and social meaning of sexuality, sexual identities, and sexual practices (as opposed to discussing merely descriptive accounts of doing sex). Sexuality Studies brings together a variety of intellectual perspectives from the humanities and social sciences; thus, our exploration of "the social construction of sexuality" will draw from scholarly fields as diverse as literature, history, religion, anthropology, law, sociology, psychology, and education, in addition to feminist, queer, and media studies.

### **WGS 250 – Politics of Sexuality (LL: Behavioral, Social or Cultural Perspectives; Gender; Community Engagement)**

The political nature of personal life is a central critical concept of Women's and Gender Studies. Politics of Sexuality introduces students to implications of this concept through the study of contested topics concerning sexuality, such as gendered sexual socialization, sexual violence, family structures, poverty and welfare, sexual identities, transgenderism, commodification, risky sexual behaviors, AIDS, sexual exploitation, pornography, prostitution, and the traffic in women.

### **WGS 252/AAS 252—Gendering the Harlem Renaissance: Black Paris (LL: Behavioral, Social or Perspectives; Gender; Global)**

Harlem Renaissance 252 focuses on the International section of Harlem Renaissance, the resonance of which was particularly important in Paris during after the First World War. We will interrogate how the social matrices of competing definitions of black identity are reflected in and through writing produced by (and in some case about) blacks in America as well as in the international context. The kinds of questions we will explore include the relationship between literature and social politics, history, community and representation. The courses will also offer students an in-depth exploration of the diverse ways that persons of African descent, and others, articulated and analyzed the key issues of the time.

### **WGS 270 Topics in Women's and Gender Studies: Girlhood Studies (LL: Gender; Behavioral, Cultural or Social Perspective)**

Girlhood occupies a precarious place in American culture. Girls are often transformed into symbols, sites of anxiety, and a gauge for national morality. Moreover, in current girlhood studies, the teenage girl presents a conundrum. Many scholars show the overwhelming ills of girls vexed by low self-esteem, growing violent or 'mean girl' behaviors, eating disorders, and bad sexual decision-making. But, in light of these many problems, scholars have also taken up the popular mantra of "girl power" to celebrate the agency of girls and their ability to combat normative femininity, misogyny, racism, and sexism. In this class we will consider these approaches to girlhood by focusing specifically on American girlhood, with some attention paid to cross-cultural constructions of girlhood. We will also explore the class, race, ethnic, and sexual differences of girls.

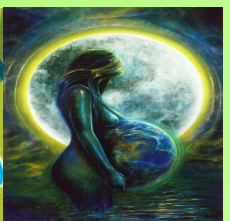
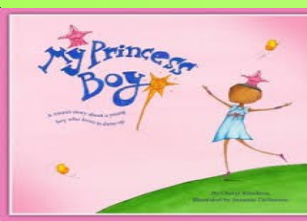
### **WGS 303/HIS 384 Women in the 20th Century US (LL: Social Change in Historical Perspective; Gender)**

An examination of the history of women in the United States in the 20th century with special emphasis on their roles in political and social movements. The course will focus more on the aspects of the general experiences of women and their political, social, cultural, and familial relationships.

### **WGS 320/LIT 315 – Men and Masculinities: Literary Perspectives (LL: Literary, Visual & Performing Arts, Gender)**

This course focuses on representations of men and masculinity in literary texts, although we may also look at film, video, television, advertising, and music. Some of the issues we will be thinking about include: the construction of modern male identities, the diversity of men's lives, the complex dynamics of men's relationships, and questions of power and social justice within the contemporary gender order.





**WGS 325 - Feminist Theories/WGST 510– Graduate Section (Prerequisite: at least one WGS course) (LL: World View; Gender)**

This course explores the diverse ways in which feminist theorists conceptualize women's status in society, systems of inequality and the category of "woman" itself. Students will gain an understanding of evolving ideas and debates in feminist theory, relate those to feminist practices, and develop their own theoretical abilities. The course will address the social construction of gender, the relation between feminist theory and activism, and how feminists have responded to issues of race, class, gender, and sexuality in current feminist thinking, as well as the classic feminist texts.

**WGS 342 LGBTQ Issues in K–12 Education: (LL: Behavioral, Social, and Cultural Perspectives; Gender)**

This course examines LGBTQ issues within the context and concerns of K-12 schooling/education. Specifically, we will focus on several themes: heterosexism in schools; homophobic and transphobic forms of bullying and violence; the history of LGBTQ educational struggles; emerging legal rights of LGBTQ students and teachers; the coming out process in high school; LGBTQ and teacher education; queer pedagogies; the politics of gay-straight alliances; the politics of queer youth (sub)cultures and online media; and LGBTQ activism in schools.

**WGS 350/WGST 520 Gender Equity in the Classroom (LL: Gender and Behavioral, Social and Cultural Perspectives)**

This seminar examines theoretical writings on feminist pedagogy and also addresses practical issues related to teaching Women's and Gender Studies. Participants will develop familiarity with feminist pedagogies and their significance for the field of Women's and Gender Studies; interpret their own educational experiences within the context of feminist reflections on education; formulate their own philosophies of education; and develop and test pedagogical strategies for developing critical consciousness about social inequalities.

**WGS 360 Lit by Latinas and Latin American Women: (LL: Literary, Visual & Performing Arts; Gender; R & E)**

A comparative study of Latina and Latin-American women's literature in English. Open to a wide range of literary traditions, nations, time periods, and genres, including those specific to non-Western and post-Colonial cultures.

**WGS 361/HIS 365/AAS 376 - African American Women's History (LL: Gender, Social Change in Historical Perspective, Race & Ethnicity)**

African American Women's History examines the lives of women of African descent in the U.S. The Course explores the experiences and contributions of African American women to the development and growth of the United States. Students will learn about African American women's roles in the church, social movements, and social reproduction, and the legacy of forced migration and slavery, and will be able to understand the relationship between African American women and the institutions, movements, individuals, ideas and values of the major eras of U.S. history.

**WGS 373/REL 373 - Women and Spirituality (LL: Gender, World Views/Ways of Knowing)**

This course examines the concept of a gender-specific way of experiencing spirituality. We will examine the idea of "women's spirituality" and explore questions of: whether the spirituality of women differs from that of men; how women connect to, critique, remember, and transform spiritual experience across cultures.

**WGS 374 - Ecofeminism (LL: Gender; World Views/Ways of Knowing)**

Building on the core precept that the domination of women and the domination of nature are fundamentally connected, ecofeminism offers a distinctive, interdisciplinary lens on the world, drawing on not only feminism and ecology, but also historical analysis, philosophy of science, cultural study, the arts, community development, spirituality, and a commitment to challenging oppression in all its forms. Through readings in the various disciplinary threads that inform ecofeminism, we will explore ways in which systemic social inequalities shape human relationships to the natural environment; challenge common abuses of the environment and offer alternatives; and study current movements globally.

**WGS 398 - Feminism in the Workplace: Field Study in Women's and Gender Studies (Prerequisite: Two WGS courses. Non-majors should consult Instructor) (LL: Gender; Community Engagement)**

This internship course is a chance for students to consolidate and enrich their undergraduate learning while building the transition to life beyond college. A WGS education trains students to think critically and act strategically on issues of social inequity, particularly relating to gender and sexuality. Feminism in the Workplace therefore focuses not on the nature and demands of particular worksites, but on work itself and organizational practices that arise from feminist theory and scholarship. The course is designed for students of junior or senior standing who are WGS majors or minors, as well as for WILL students.

**WGS 495 – Senior Seminar: Methods and Theories (LL: Gender) Prerequisite: WGS 325**

This course is the capstone courses for the Women's and Gender Studies major. Students are expected to use expertise gained from their previous WGS courses to research and write their senior theses. Drawing on the methodologies and theories learned in previously taken courses, students work in a small focused seminar that emphasis not only their own work, but also critiquing the work of their peers. Students will produce a research paper applying feminist theories and methodologies. In addition, they will share their work with other students, providing analysis and critiques of one another's papers in progress.

**WGS 496 - Women's Leadership and Social Change (Prerequisite: WGS 200 Women, Culture and Society and WGS 325 Feminist Theories) (LL: Behavioral, Social or Cultural Perspective, Community Engagement, Gender)**

In this W.I.L.L. capstone seminar course, students will experience the interfaces between empirical knowledge and social policies through selecting, organizing, and implementing a class activism project. This course is the culmination of the W.I.L.L. Program in which students will expand and enhance their leadership skills using acquired strategies and tactics to influence social, political, or economic change.

Spring 2016 WGS Sections			Liberal Learning Goals:		G	GP	R&E	SCHP	BC	LV	WV	CE	WI	SI
WGS 200 Women, Culture, & Society									X					X
01	Nicolosi (WILL)	TF: 11:00 – 12:20 pm							X					
02	Adair	TF: 2:00 – 3:20 pm	X											
03	Adair	TF: 3:30 – 4:50 pm												
WGS 220 Gender and Popular Culture										X VPA				
01	Kurtz	T: 4:00 – 6:50 pm	X											
02	Kurtz	W: 5:00 – 7:50 pm												
03	Farnkopf	R: 5:30 – 8:20 pm												
04	Van Buren	TF: 9:30 – 10:50 am												
05	Braverman	M: 5:30 – 8:20 pm												
06	Rossie	MR: 8:00 – 9:20 am												
WGS 222/HGS 210 Non Violence and Peace Action					X	X			X					
01	Gray	MR: 12:30												
WGS 225 Gender in Children’s Literature					X					X				
01	Van Buren	TF: 11:00 – 12:20 pm												
02	Vogt	MR: 3:30 – 4:50 pm												
03	Vogt	MR: 5:30 – 6:50 pm												
WGS 235 Gender and Violence					X				X					
01	Gervasi	MR: 5:30 – 6:50 pm												
WGS 241 Intro to Sexuality Studies					X				X					
01	Rodriguez	MR: 2:00 – 3:20 pm												
WGS 250 Politics of Sexuality														X
01	Addison-Britto	TF: 8:00 – 9:20 am												
02	Addison-Britto	TF: 9:30 – 10:50 am	X						X			X		
03	Salthouse	R: 5:30 – 8:20 pm												
04	Weller	W: 5:30 – 8:20 pm												
WGS 252 Gendering the Harlem Renaissance: Black Paris (Same as AAS 280)					X		X							
01	Adair	TF: 11:00 – 12:20 pm												
WGS 270 Topics in WGS: Girlhood Studies					X				X					
01	Rossie	MR: 9:30 – 10:50 am												
WGS 303 Women in the 20 <sup>th</sup> Century U. S. (Same as HIS 384)					X			X					X	
01	Genter	MR: 9:30 – 10:50 am												
02	Genter	MR: 11:00 – 12:20 pm												
WGS 310 Women in Eastern Europe 1848 – Present (Sames as HIS 324)					X	X		X					X	
01	Paces	MR: 12:30 – 1:50 pm												
WGS 320 Men and Masculinities (Same as LIT 315)					X					X			X	
01	Dalpe	T: 5:30 – 8:20 PM												
WGS 325 Feminist Theories/WGST 510 (Grad Certificate Feminist Theory Course)					X						X		X	
01	Jaksch	M: 5:30 - 8:20 pm												
WGS 342 LGBTQ Issues in K-12 Education					X				X					
01	Rodriguez	MR: 3:30 – 4:50 pm												
WGS 350 Gender Equity in the Classroom (Same as WGST 520 Grad Cert. Course)					X				X					
01	Rodriguez	R: 5:00 – 7:50 pm												
WGS 360 Lit by Latina and Latin American Women (Same as LIT 334)														
01	Ortiz	MR: 9:30 – 10:50 am												
02	Ortiz	MR: 11:00 – 12:20 pm												
WGS 361 African American Women’s History (Same as HIS 365 and AAS 376)					X			X					X	
01	Francis	MR: 12:30 – 1:50 pm												
02	Francis	MR: 3:30 – 4:50 pm												
WGS 373 Women and Spirituality (Same as REL 373)					X						X		X	
01	Hopps	MR: 11:00 – 12:30 pm												
WGS 374 Ecofeminism					X						X			
01	Gray	MR: 3:30 – 4:50 pm												
WGS 398 Field Study in Women’s Studies					X								X	
01	Gray	W: 5:30 – 8:20 pm												
WGS 495 Senior Seminar: Research and Methods					X								X	X
01	Jaksch	T: 5:30 – 8:20 pm												
WGS 496 Senior Seminar: Women’s Leadership & Social Change					X								X	X
01	Hopps	R: 4:00 – 6:50 pm												